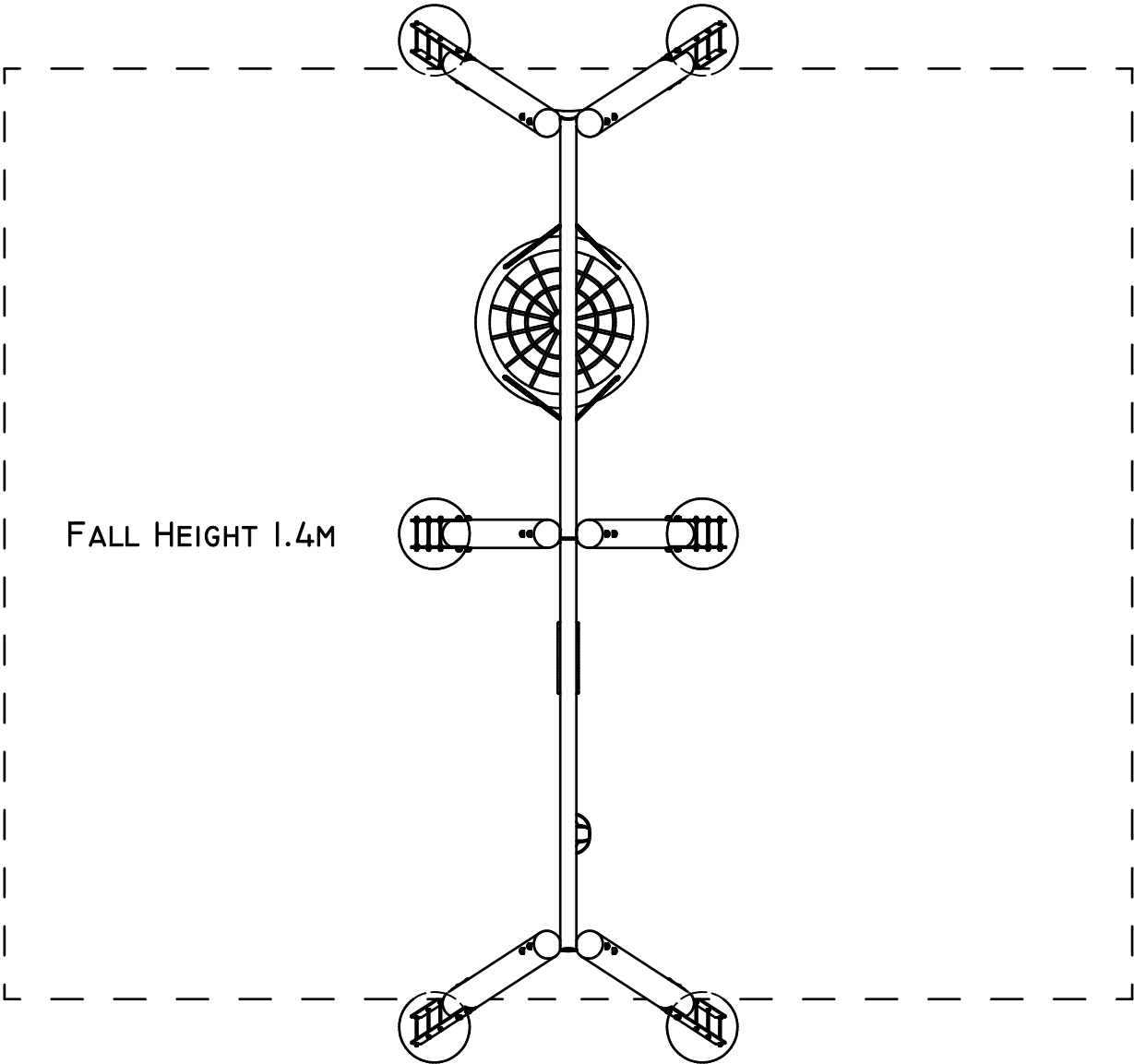


FOOTING QUANTITIES AND DEPTHS
FROM GROUND LEVEL

ITEM	QTY	HOLE DIAMETER	HOLE DEPTH
POST	6	500	800

NOTE:

- THIS PRODUCT IS DESIGNED FOR 300MM SOFT FALL. CHECK THE PROPOSED ON SITE SOFT FALL DEPTH. IF IT IS NOT 300MM PLEASE ADJUST DEPTHS OF POST HOLES ACCORDINGLY, TO ACHIEVE CORRECT OVERALL SUBSURFACE DEPTH. THIS WILL MAINTAIN CORRECT HEIGHT OF EQUIPMENT ABOVE UNDERSURFACE LEVEL.

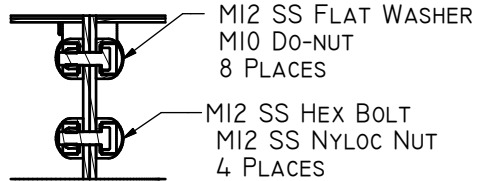


FALL HEIGHT 1.4M

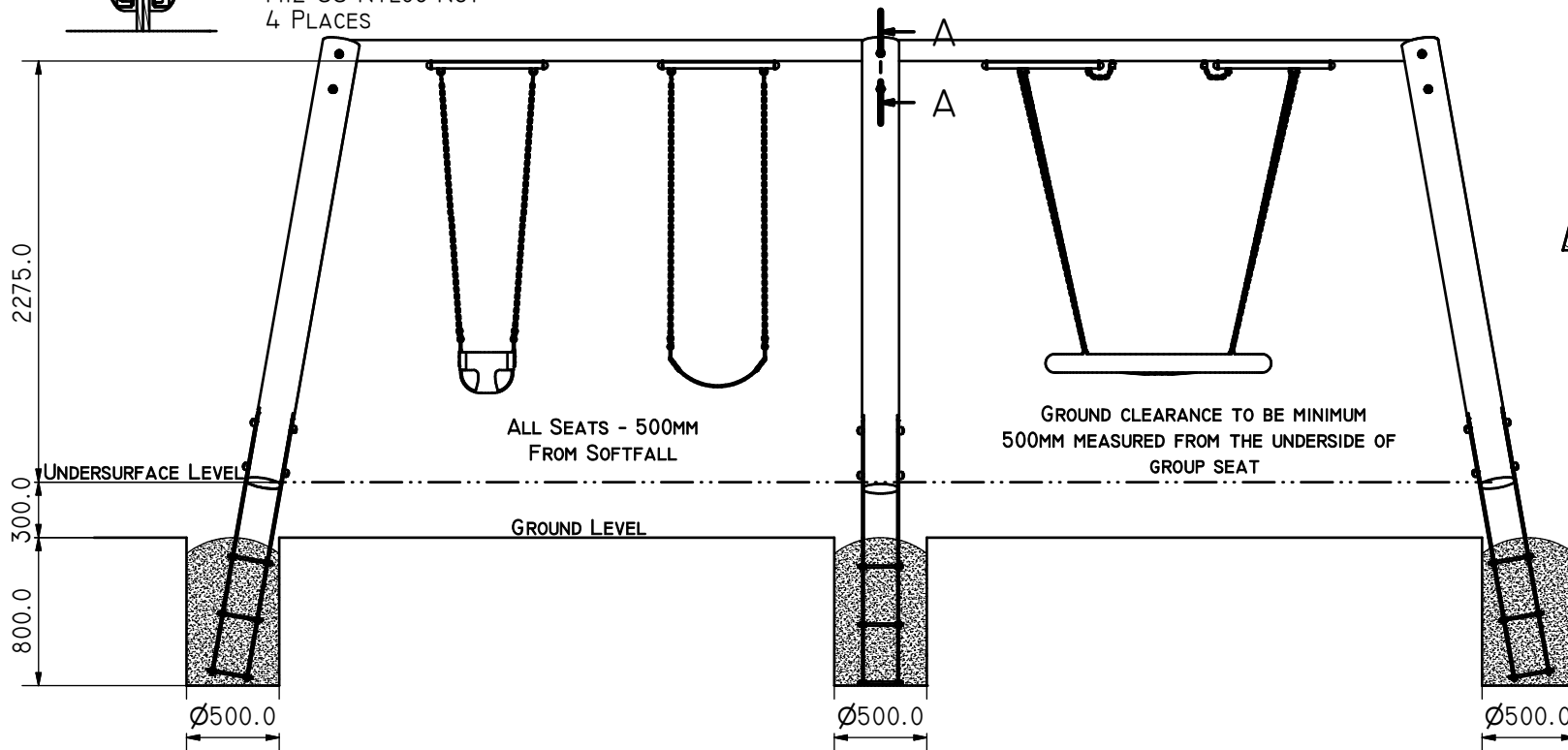
JOB N°	PLANNED BY		UNLESS STATED OTHERWISE - ALL DIMENSIONS ARE IN MILLIMETRES. GENERAL TOLERANCES: DIN ISO 2768-mK					
	PLAN DATE							
JOB NAME	MADE BY	DRAWN	DE	ITEM N°	SF LOG MULTIBAY SWING			
		DATE	12/19/2023	A-SWG-2231				
	MFG DATE	CHECKED		STOCK / LEGACY N°	DRAWING N°			
		DATE		PN1454	A-SWG-2231-001			
© 2024 THE PLAY COLLECTIVE ABN 28 101 472 619. THE INFORMATION CONTAINED IN THIS DRAWING IS THE SOLE PROPERTY OF THE PLAY COLLECTIVE. ANY REPRODUCTION IN PART OR WHOLE WITHOUT THE WRITTEN PERMISSION OF THE PLAY COLLECTIVE IS PROHIBITED. ANY UNCERTAIN DIMENSIONS ARE TO BE CONFIRMED BY PLAY COLLECTIVE BEFORE COMMENCEMENT OF MANUFACTURING.					REV	SCALE: NTS	SHT 1 OF 2	A3

1	2
ASSEMBLY INSTALL LIST	QTY
CROSS BAR	2 OFF
SWING POSTS	6 OFF
BOLT M12x 220MM	12 OFF
BOLT M12x 40MM	4 OFF
NYLOC M12 SS	16 OFF
WASHER M12 SS	32 OFF
DO-NUT M12	32 OFF
MUD GUARD WASHER	12 OFF

SECTION B-B (1 : 5)



SWING HEIGHT TO BE SET AT INSTALLATION
GROUP SWING SIDE TO BE DECIDED BEFORE
INSTALLATION. CROSSBARS ARE NOT INTERCHANGEABLE

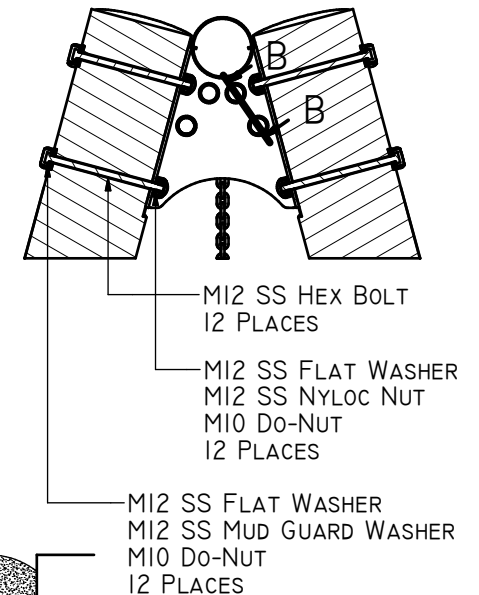




FOOTING QUANTITIES AND DEPTHS FROM GROUND LEVEL			
ITEM	QTY	HOLE DIAMETER	HOLE DEPTH
POST	6	500	800

NOTE:

THIS PRODUCT IS DESIGNED FOR 300MM
SOFT FALL. CHECK THE PROPOSED ON SITE
SOFT FALL DEPTH. IF IT IS NOT 300MM PLEASE
ADJUST DEPTHS OF POST HOLES ACCORDINGLY, TO
ACHIEVE CORRECT OVERALL SUBSURFACE DEPTH.
THIS WILL MAINTAIN CORRECT HEIGHT OF
EQUIPMENT ABOVE UNDERSURFACE LEVEL.

SECTION A-A (1 : 10)



JOB N°	PLANNED BY		UNLESS STATED OTHERWISE - ALL DIMENSIONS ARE IN MILLIMETRES. GENERAL TOLERANCES: DIN ISO 2768-MK						
	PLAN DATE								
JOB NAME	MADE BY	DRAWN	DE	ITEM N° A-SWG-2231		SF LOG MULTIBAY SWING			
		DATE	12/19/2023						
	MFG DATE	CHECKED	STOCK / LEGACY N° PNI454		DRAWING N° A-SWG-2231-002				
		DATE							
© 2024 THE PLAY COLLECTIVE ABN 28 101 472 619. THE INFORMATION CONTAINED IN THIS DRAWING IS THE SOLE PROPERTY OF THE PLAY COLLECTIVE. ANY REPRODUCTION IN PART OR WHOLE WITHOUT THE WRITTEN PERMISSION OF THE PLAY COLLECTIVE IS PROHIBITED. ANY UNCERTAIN DIMENSIONS ARE TO BE CONFIRMED BY PLAY COLLECTIVE BEFORE COMMENCEMENT OF MANUFACTURING.						REV	SCALE: NTS	SHT 2 OF 2	A3